

Project Update

Cethana Pumped Hydro Project

In this issue, we share an update on key milestones in our planning and approvals, next steps in our planning for workforce accommodation, and launch a survey so you can share your views about the project with us (and win!).



We've now completed our geotechnical investigations to find out more about the ground conditions at the upper storage site. The data from the investigations helps us to better understand the surface and underground conditions and the materials present at the site. We had up to three drilling rigs completing our geotech program between August 2023 and July 2024.

About the project

The Cethana pumped hydro project would utilise the existing Lake Cethana as its lower storage. A new upper storage would be built on the western side of the existing lake and a new underground power station built between the two storages.

Pumped hydro works by recirculating water between two storages. Excess electricity in the grid is used to pump water uphill into the upper storage. When energy demand is high, it is released through the turbines to generate electricity.

Across the energy grid, more of our electricity is being generated from wind and solar. But what if the wind doesn't blow and the sun doesn't shine? We need energy storage systems to quickly fill the gaps and ensure reliability across the grid. Pumped hydro is one of those storage technologies, providing long-duration, firming capacity to the grid.

We are progressing planning and detailed studies on the proposed Cethana pumped hydro project. The project requires approvals from the Tasmanian and Commonwealth governments, and Kentish Council (see page 3 for more on our progress in the approvals process).

To support these approvals, we are finalising a range of specialist studies looking at potential project impacts and benefits:

- traffic and transport
- noise and vibration
- visual impacts on the regional landscape
- economic impacts
- social impacts (such as workforce accommodation).

We have completed geotechnical investigations to get a better understanding of the geological conditions on site and the properties of potential construction materials.

These studies are also an important part of the work required to reach a final investment decision.

Our team has been out and about in the community. We love hearing your thoughts, as it helps us shape and improve the project.

There will be more opportunities to share your views over the coming months. The back page has all the details on how to get in touch and what's next.



Housing a future workforce

This is a major infrastructure project. It will require a workforce of around 350 workers over the peak construction period.

A construction workforce works long hours, requiring accommodation close to the construction site to rest and eat. A high standard of purpose-built accommodation will help to recruit and retain the workforce.

We are committed to reducing social and economic impacts to the local community and businesses. A high quality, purpose-built temporary facility will help this by:

- Limiting impacts on local and regional housing availability and affordability
- Reducing impacts on short-stay and tourism accommodation in the region
- Help foster positive health and wellbeing outcomes for workers through high quality accommodation, amenities and services
- Minimising traffic volumes on local roads during the construction period
- Creating opportunities for local employment and businesses
- Minimising impacts on health and community services in host communities
- Providing opportunities to potentially repurpose the accommodation for local community benefit at the end of construction.

The accommodation will be high quality self-contained modular units, along with catering and dining halls,

laundry facilities, administration and parking areas and access to recreational activities.

It is called temporary because it provides accommodation during the construction period only.

We are starting the process of securing land to support the construction of workforce accommodation facilities.

What is the process for finding suitable land?

We have engaged a local land agent, Elders Commercial, based in Devonport. They will manage an open, multi-stage expression of interest process on behalf of Hydro Tasmania for owners of suitable land who are interested in being involved. We are open to considering either purchasing or leasing suitable land.

Who do I contact if I am interested in expressing interest about my land?

Please get in touch with Elders Devonport by scanning the QR code:



Image shows one of the temporary workforce accommodation built for the Snowy 2.0 project

Breaking down the approvals process

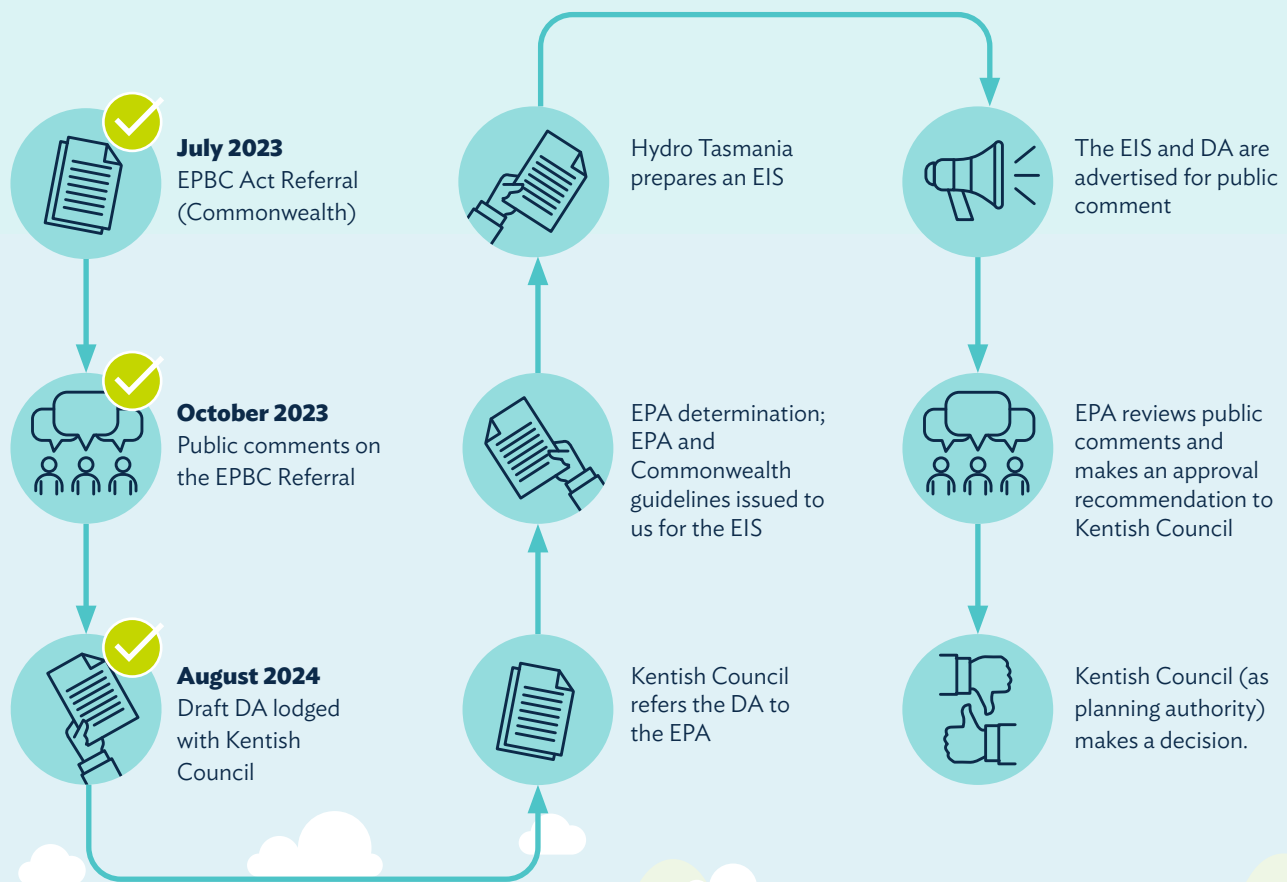
There are a number of approvals needed for the project at different levels of Government – Local, State and Commonwealth.

The Commonwealth looks at matters of national environmental significance for the project. After assessing the project description and documents we have lodged with them, they will provide guidelines to the Tasmanian EPA to ensure matters they are concerned about are fully analysed and explained.

The EPA will also develop guidelines. Together, these will guide how we develop the Environmental Impact Statement (EIS).

Our lodgement of a Development Application (DA) starts the process of project assessment by the Kentish Council and the EPA.

The graphic below shows the steps in the approvals process, the progress made and the next steps. There will be opportunities for the community to comment on the DA and EIS during 2025, with timing be confirmed with each step.



If you'd like to know more about how it all works, please head to our project webpage.

connect.hydro.com.au/cethana-pumpedhydro



Out and about

Wildlife monitoring

We are conducting studies to better understand any impacts of the project on environmental values and how we can minimise them.

Two key monitoring programs are:

Den use. The upper storage area has lots of wombat dens so we have set up cameras to see what other creatures are using them. We can better plan our future pre-construction protocols once we know more about den use.

Any owls? We are using sound monitoring to detect the calls of masked owls to find out if they are nesting in the area. Our team have been out climbing trees to set up specialised equipment to detect owl calls.



Coming up

November

We're throwing open the "doors" to the Cethana Power Station. Keep an eye out for details on the 23 November Open Day event.

December

We'll be at Claude Road Markets on 14 December! Drop by to say hi to our team and ask your questions.

Early 2025

With our technical studies being finalised, our team will be back out in the community to discuss the results and what is next.

Keeping your Council updated

Our team met with Kentish Council recently. We provided an update on the project status, approvals, timing and what we have heard from the community on impacts and opportunities. Please get in touch if you'd like a project update for your community or interest group.

SURVEY



**Scan to complete
an online survey**

Tell us what you think and WIN!

We're keen to understand community views about the proposed pumped hydro project. Tell us what you think by completing our short survey.

Your answers will allow us to consider and address potential impacts of the project on your way of life, and how you visit and experience the district around the proposed project location.

You will have the chance to win one of five \$100 gift cards (a grocery or retail gift card of your choice)! *

You can find survey return boxes at:

- Sheffield Post Office and Kentish Council
- Wilmot Post Office
- Railton – Limestone Cafe & Bakery
- Moina Blue Tree Gallery and Cradle Gateway Chalets and Cafe
- Gowrie Park – Hydro Tasmania's office

*Terms and conditions apply and can be found on our project page.

Get in touch!

m 0457 237 453 **e** pumpedhydro@hydro.com.au **w** connect.hydro.com.au/cethana-pumpedhydro

