

Cethana Pumped Hydro Project



Temporary Workforce Accommodation Update

Introduction

Tasmania's demand for renewable energy is increasing. New wind and solar farms will complement our hydro network to help power our lives and our economy.

But what happens when the wind doesn't blow and the sun doesn't shine? The proposed 750MW Cethana Pumped Hydro Project is designed to store energy, ready to be used to fill in any gaps in supply.

It's one part of the renewable energy solution that will help deliver secure, reliable electricity in Tasmania for generations to come. Plus, this project will create hundreds of jobs during construction.

To support this workforce, we've found a site for a temporary Workforce Accommodation Facility in Middlesex, next to Cradle Mountain Road, as shown on the image below.



What is temporary workforce accommodation?

The proposed temporary workforce accommodation facility provides quality accommodation and amenities. It is a place for workers to sleep, eat and relax throughout the expected eight year construction phase.

Careful consideration will be given to the layout, quality of accommodation and services provided at the facility, including recreation facilities like a gym, running track and outdoor spaces.

Why is temporary accommodation needed?

We're planning to build a temporary accommodation facility to support the workforce needed for the Cethana project. Some parts of the project - like building underground tunnels - require specialist skills that may not be available locally. Because of this, we expect many workers will come from outside Tasmania, either flying in (FIFO) or travelling by bus (BIBO).

We've heard from the local community that there isn't enough suitable housing in the area to meet the increased demand.

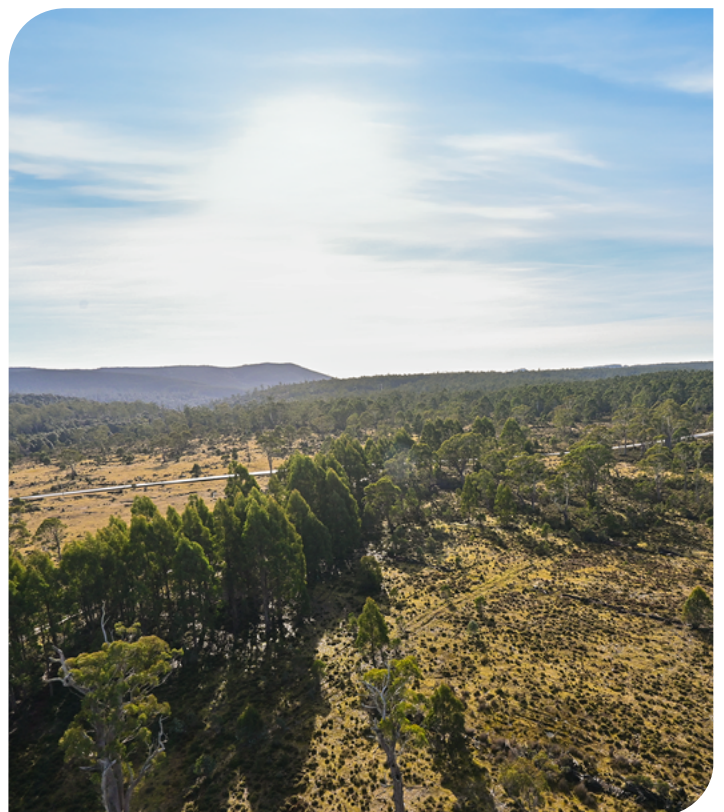
A dedicated, temporary workforce accommodation facility is the best way to house workers without adding pressure to the local rental or visitor accommodation markets.



How did we choose the site?

The Middlesex site was selected through an expression of interest process. A range of factors were considered to ensure it was suitable for the project. Key reasons for selecting this site include:

- Proximity to the Cethana Pumped Hydro project site (less than a 10-minute drive)
- Reduced traffic impact on Cradle Mountain Road and surrounding local roads
- Easy access from Cradle Mountain Road
- Little environmental impact by using land that has already been disturbed
- A suitable size and relatively flat terrain, making construction simpler
- Potential to minimise visual impacts on the surrounding landscape
- Access to outdoor recreational opportunities
- Adequate distance from residential neighbours to reduce disruption





Key elements of the design include:

- Accommodation units with private bathrooms
- Shared facilities such as catering and dining areas
- Recreation and wellbeing spaces, including a gym, running track, and hard-surface sports court
- Outdoor amenities like BBQs and picnic areas
- Administrative buildings, car and bus parking, and other supporting services
- A helipad for emergency use

A **concept** plan for the site is provided below. This is only a concept at this stage and may change as we progress technical assessments.



KEY

A	ACCOMMODATION
B	WATER AND WASTEWATER
C	HELIPAD & ACCESS ROAD
D	DOVE RIVER ROAD
E	SETBACK & BUFFER ZONE

How many people will live there?



A development application will be submitted for up to 450 people. However, the number of people on site will fluctuate depending on the needs of the project.

We expect the workforce may vary between 300 to 450 people at peak construction with lower numbers during the early and late stages of the project.

Assessing potential impacts

We're committed to planning the facility carefully so that any impacts on the community are minimised.

To help guide our planning, we're carrying out a range of technical assessments to better understand and manage potential impacts. These include:

- Noise Impact Assessment
- Traffic Impact Assessment
- Visual Impact Assessment
- Water and sewerage management
- Natural Values Assessment
- Aboriginal Heritage Assessment
- Bushfire Assessment

The findings will be shared as part of our Development Application, so you'll be able to see how we're addressing each of these important issues.

We want to hear from you!



This proposed temporary accommodation facility is the first of its kind in Tasmania, and we want to make sure it's planned and managed in a way that brings the greatest benefit to the workforce and to the local community.

That's why we're reaching out — to understand your thoughts, questions, and concerns early in the planning process.

Tell us how you'd like to be involved

We're offering a range of ways to connect – over the phone, in-person, a pop-up information stand near the site, and an online webinar. So we can contact you in the way that suits you best, please complete the short form using the QR code below:

LEARN MORE



Once we receive your details, one of our team will be in touch.

Pop-up information stand

Saturday 16 August

10:00 am–2:00 pm

Cradle Gateway Chalets, Moina

Online webinar

Wednesday 20 August

A 45 minute session with project information and a chance to ask questions

We're looking forward to hearing from you. Your input will help shape how this facility is developed.