

Hydro Tasmania

SAFETY BRIEF

Yellow Lock Fell Off Permit Lock Box

Brief Number (YYMMDD)	250326	Date Issued	26 March 2025
SAP Number (if applicable)	66659	Approved By	Head of WHS
Action Required?	Yes		

Summary

A yellow isolation lock detached from a Permit to Work lock box when an Instructed Person was signing off the permit at the end of shift. All site permits were shut down with permits being handed back to the AIO to validate all isolations.

The investigation has revealed that the lock has been worn and damaged, not cut as first thought. Damage to the shackle of the lock has caused it to fail, potentially as a result of the permit box being dropped.

Photos



Photo 1 – Actual broken lock.

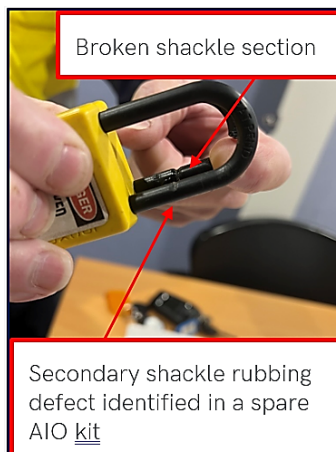


Photo 2 – Broken lock shackle compared to other identified damaged lock.

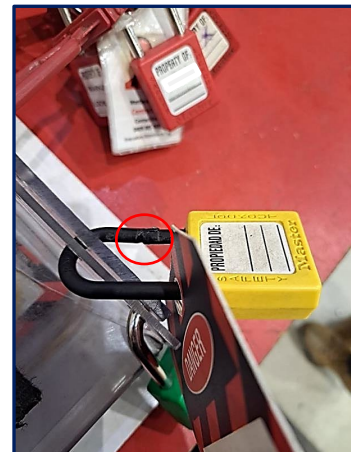


Photo 3 – Damaged lock location on PTW box.

Message

Isolation locks, serve several critical purposes in ensuring the safety of workers and equipment.

- Regularly inspect isolation lock shackles for wear or damage.
- Remove any locks with potentially damaged shackles from service immediately.
- Follow the 'Lock and Key Management' section of the Isolation Procedure for lost or damaged lock procedures.