



Cultural Heritage Program NEWSLETTER

Number 13 • March 2008



Lake Margaret Power Scheme awarded Engineering Heritage Marker

On 23 February, the Governor of Tasmania, the Hon. William Cox, unveiled an Engineering Heritage Marker for Lake Margaret Power Scheme at a ceremony held at Queenstown. The plaque was presented by Julie Hammer, the National President of Engineers' Australia, and accepted on behalf of Hydro Tasmania by CEO, Vince Hawksworth. Once the formalities were over, many of the 60 or so people who attended braved the wet and wild conditions to undertake a very interesting tour of the Lake Margaret site.



Pictured here with the plaque is National President of Engineers Australia, Julie Hammer, Governor of Tasmania The Hon. William Cox and Hydro Tasmania CEO Vince Hawksworth.



Visitors viewing the photographic display in the Lake Margaret Community Hall

Lake Margaret Proposed Redevelopment

In December 2007 the Hydro Tasmania Board approved the design and tender phase of a refurbishment of the Lake Margaret Power Station,

with a view to recommissioning the scheme. Given the heritage listing of the station, Heritage Council of Tasmania approvals will be necessary for any re-development works. Planning is already well underway and keeping Cultural Heritage Program staff busy, including numerous site inspections. It is intended that a final business case will be submitted to the Board for approval by mid-year.

Hydro Tasmania is also working closely with the West Coast Council and the Lake Margaret Community Liaison Group to explore options for tourism development at the site.

Aboriginal Heritage Agreement Signed

On the 12 December 2007 the Aboriginal Heritage Agreement was signed by Hydro Tasmania's CEO and the Manager of the Tasmanian Aboriginal Land and Sea Council (TALSC), Hank Horton.



Vince Hawksworth (left) Hank Horton, TALSC (right). Also pictured are (standing from left) Sandra Hogue, Andrew Scanlon, Andrew Pattle and Ruth Painter.

This landmark agreement will pave the way for the more effective management of Aboriginal heritage sites on Hydro Tasmania land.

Aboriginal Regional Partnership Agreement

In February 2008 Hydro Tasmania became a signatory to a joint State and Federal Government land management initiative, in the form of a Regional Partnership Agreement. The RPA aims to increase Aboriginal community engagement in natural and cultural resource management, by providing training and future employment opportunities.

Aboriginal Heritage Pilot Study

Over the next few months consultant archaeologist, Anne McConnell, will be engaged to carry out a pilot study of Aboriginal heritage sites in the Lower Derwent Valley and Central Highlands Lakes areas. Anne's survey work will be used to inform the ongoing

development of a predictive model for Aboriginal heritage sites. The model will improve the risk assessment process used by Hydro Tasmania's project managers by assisting them to determine the likelihood of Aboriginal heritage sites in certain areas.

Aboriginal Heritage Projects

A wide range of Aboriginal heritage projects are currently underway, including providing general Aboriginal history for tours at Strathgordon, low lake level assessments, and input to a series of Environmental Impact Assessments for proposed future works.

National Trust Heritage Festival Display

The annual National Trust Heritage Festival is just around the corner. Hydro Tasmania has prepared a public display '*Life was what one made it: leisure and recreation in Tasmania's Hydro villages 1910s-1980s*'. It focuses on the life and recreational activities of Hydro Tasmania's workers and their families who lived in some of Tasmania's remotest locations. Community halls, tennis courts and other facilities were often provided at the villages, but for the most part people made their own fun.

The display will be open during business hours throughout April in the foyer of the Hydro Tasmania offices at 4 Elizabeth Street, Hobart. Entry is free.



Tennis party at Waddamana, 1920s

Oral History Update

Hydro Tasmania's long awaited oral history publication titled "Ticklebelly Tales – and other stories from the people of the Hydro" is at the printers. A launch date in May is soon to be announced.

Mossy Marsh Siphon Rock Carving – update

An article about the Mossy Marsh siphon rock carving in our last newsletter drew the attention of a number of

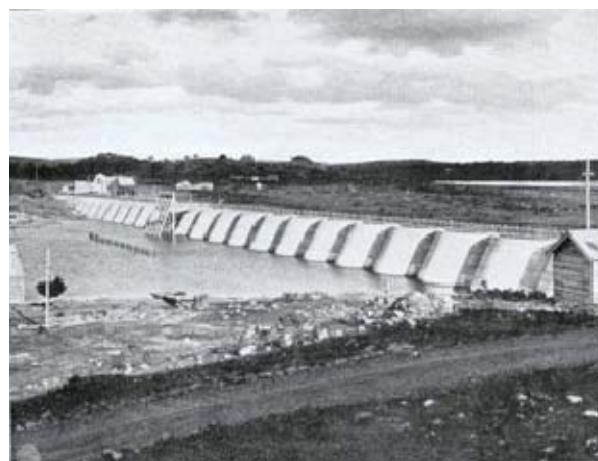
readers who provided additional information. The carving was made by members of an army garrison stationed at Tarraleah during WWII.

Military stations were established at all HEC operations after the entry of Japan into the war, and were carried on for some time after the Battle of the Coral Sea (May 1942). The garrison headquarters was at Tarraleah, but sections were also located at the Mossy Marsh Siphon and at Butler's Gorge intake works. After their departure the Volunteer Defence Corps played an active role in surveillance. War-time measures at Hydro stations included the excavation of air-raid shelters, and 'black out' regimes. With the threat of Japanese invasion, security during these tense times was taken very seriously.

Miena Dam Plaques –information needed

The Cultural Heritage Staff at Hydro Tasmania are now trying to uncover another mystery. The old multiple arch Miena Dam on the Great Lake scheme was constructed in 1922 and was the second dam to be built on this site. Three commemorative plaques were located on the bridge across the original dam. One of these commemorated the opening of the dam by Governor General Lord Forster in 1923, the second plaque gave details of the dam's dimensions and the names of officers associated with its construction, including W. E. MacLean (Resident Engineer), C. C. Halkyard (Design Engineer) and A.H. Bastow (Hydraulics Engineer). The third plaque was part of a model of the original masonry dam built in 1914-1916.

In 1969 the level of water in the dam was raised, covering the old dam. At this point the plaques were removed with the intention of incorporating them in a cairn above the new supply level. Hydro Tasmania is now trying to locate these plaques. We would be interested to hear from anyone who has information which may help us.



Multiple Arch Dam at Miena c.1923

Would you like to know more about the Program?

Please feel free to contact:

Sandra Hogue
Environmental Programs Manager
Phone: 6230 5248 or
<mailto:sandra.hogue@hydro.com.au>

Sarah Waight
Cultural Heritage Program Consultant
Phone: 6230 5703 or
<mailto:sarah.waight@hydro.com.au>

